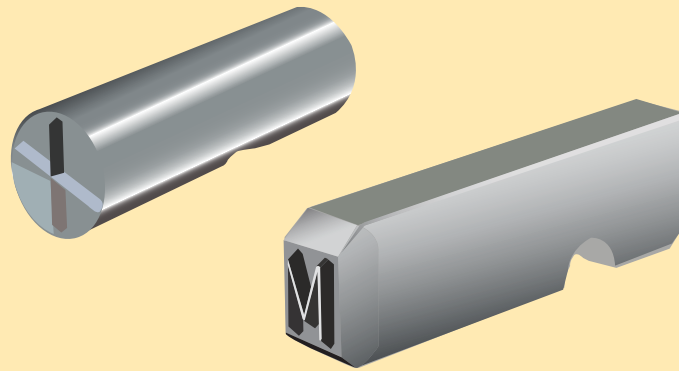
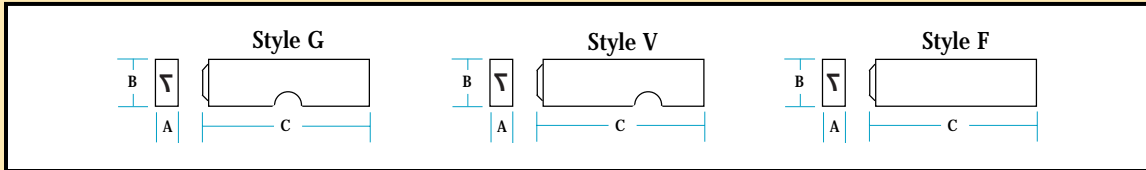


Impact Marker Steel Type

Each piece of steel type is engraved on high quality tool steel and carefully heat treated. The blanks are accurately milled to fit in the appropriate Impact Marker Rod End.

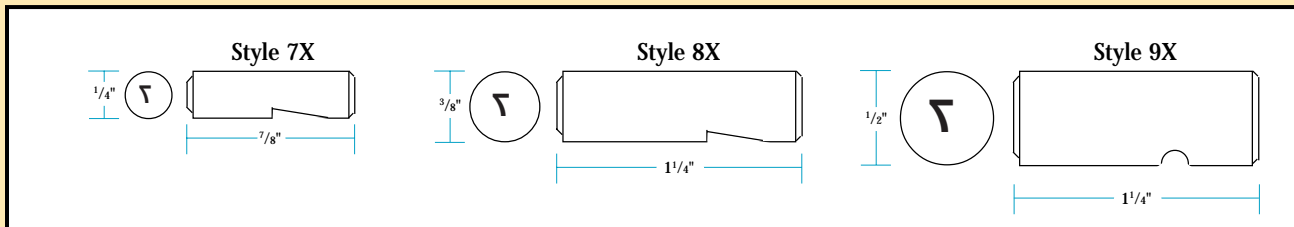


See IN-120A for Impact Marker Specifications



Char. Size	Blank Dimensions			Style G	Style V	Style F
	A	B	C	Standard Groove Part No.	Special Groove Part No.	Standard Flat Part No.
1/16"	1/16"	1/4"	7/8"	CMG06-	CMV06-	CMF06-
3/32"	3/32"	1/4"	7/8"	CMG09-	CMV09-	CMF09-
1/8"	1/8"	1/4"	7/8"	CMG13-	CMV13-	CMF13-
5/32"	5/32"	1/4"	7/8"	CMG16-	-	-
3/16"	3/16"	5/16"	7/8"	CMG19-	-	-
1/4"	1/4"	3/8"	7/8"	CMG25-	-	-

**Delivery
2 weeks**



Char. Size	Style 7X 1/4" diameter Part No.	Style 8X 3/8" diameter Part No.	Style 9X 1/2" diameter Part No.
1/16"	CM7X06-	CM8X06-	CM9X06-
3/32"	CM7X09-	CM8X09-	CM9X09-
1/8"	CM7X13-	CM8X13-	CM9X13-
5/32"	CM7X16-	CM8X16-	CM9X16-
3/16"	CM7X19-	CM8X19-	CM9X19-
1/4"	-	CM8X25-	CM9X25-

Phone or fax for a **FAST QUOTE**

To order individual letters and numbers, simply add the suffix of the actual letter or figure to the Part Number.

CMG	09	-A
Style	Char. Size	Letter or Figure

For Blank Spacers, add suffix "-00" to Part Number.

For Punctuation, add suffix from table at right to Part Number.

Mark	Symbol	Suffix
Dash	-	-DD
Period	.	-PP
Comma	,	-CC
Diagonal	/	-SS
Ampersand	&	-AA
Number Sign	#	-TT
Multiplication Sign	X	-MM
Equals Sign	=	-EE
Colon	:	-LL
Plus Sign	+	-UU
Asterisk	*	-RR
Percent Sign	%	-QQ
Dollar Sign	\$	-BB