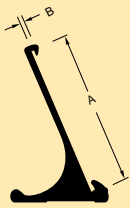


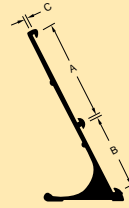
## Nameplate Holders

**Extruded Aluminum.**  
Anodized bright gold or silver.



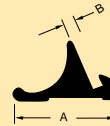
Style	A	B	7"	8"	10"
25	1"	1/16"	\$6.40	\$6.00	\$6.80
48	2"	1/16"	-	8.70	9.80

Also available in 3/4", 1 1/4", 1 1/2", 1 5/8" and 3 1/4" depths; 4", 6" and 12" lengths; 1/8" slot.



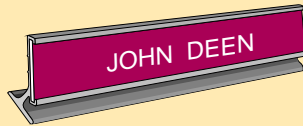
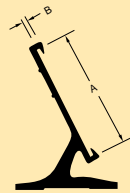
Style	A	B	C	9"
23	2"	1 1/2"	1/16"	\$23.20

Also available in 10" and 12" lengths.



Style	A	B	8"	10"
97	1 7/16"	1/16"	\$11.90	\$13.30

Also available in 3/4" and 15/16" widths; 6" and 12" lengths.

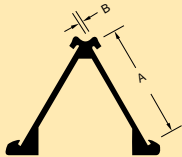


**SAME DAY SERVICE**

... Prices in RED

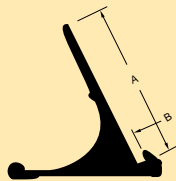
Style	A	B	9"
31	1 1/2"	1/16"	\$11.90

Also available in 2" depth; 8" and 10" lengths.



Style	A	B	6"
71	1 1/4"	1/16"	\$10.40

Also available in 2" depth; 8" and 10" lengths.



For other sizes, ask for a ...

**FAST QUOTE**

Style	A	B	10"
55	2 1/2"	1/8"	\$18.80

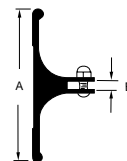
Also available in 8" and 12" lengths.

## Sign Holders



Style	A	B	6"	8"	10"
28	1"	1/16"	\$3.50	\$4.30	-
36	2"	1/16"	-	5.60	\$6.00

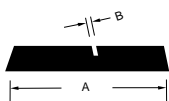
Also available 1/16" slot: 1/2", 5/8", 3/4", 1 1/4", 1 1/2", 1 5/8", 1 3/4", 2 1/2", 3" and 4" depths; 1/8" slot: 1 1/2", 1 3/4", 2", 2 1/2", 3" and 4" depths.



Style	A	B	2"	3"	4"	5"
38	1 1/2"	1/8"	\$6.40	\$8.80	\$9.60	\$12.20

Includes cap nuts and screws. Also available in 10" and 12" lengths.

## Acrylic Holders



Molded acrylic plastic with a highly polished finish on all surfaces. 1/4" thick with bevelled edges. Available in clear or black.

Style	A	B	8"	10"
P100	2"	1/16"	\$6.60	\$8.20

**Delivery 5 days**

### Order Quantity Discounts

10	25	50	100	250
10%	20%	25%	30%	Quote

All holders may be grouped for total discount.