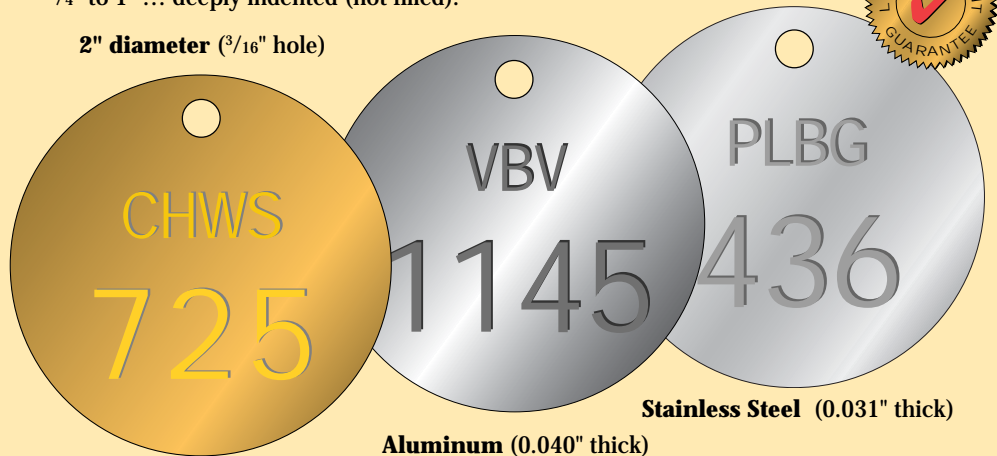


Stamped Valve Tags

Permanently stamped tags for harsh environments. Prices include two lines of custom letters and/or numbers ... characters sizes from 1/4" to 1" ... deeply indented (not filled).

2" diameter (3/16" hole)



Brass (0.032" thick)

Aluminum (0.040" thick)

Stainless Steel (0.031" thick)

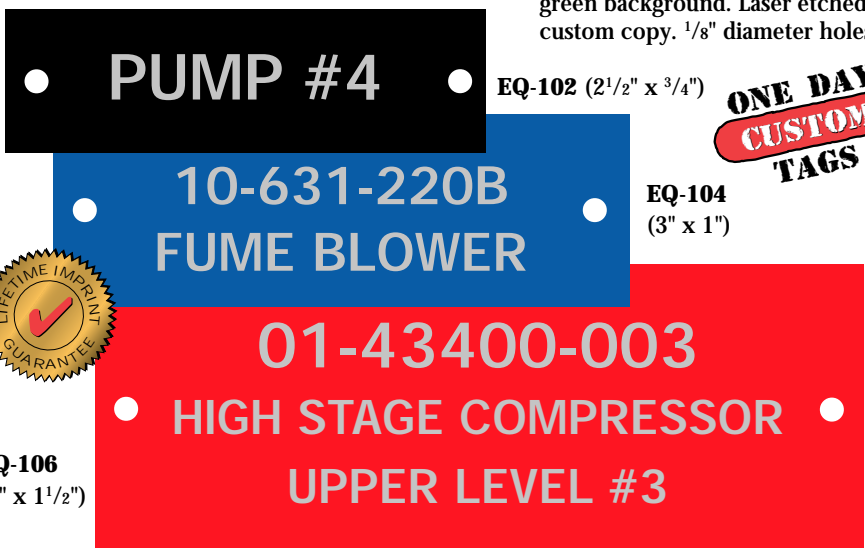
Illustrations Full Size

Stamped Valve Tags. Lettered & numbered. 2" diameter. 3/16" hole. Prices each.

Material	10	25	50	100	250	500
Aluminum	\$3.51	\$3.07	\$2.63	\$2.13	\$1.61	\$1.31
Brass	4.79	4.19	3.59	2.99	2.33	1.93
Stainless Steel	7.88	6.89	5.91	4.93	3.89	3.06

Etched Equipment Plates

Easily identify equipment, components and instrumentation. Anodized aluminum (0.020" thick) ... black, red, blue or green background. Laser etched custom copy. 1/8" diameter holes.

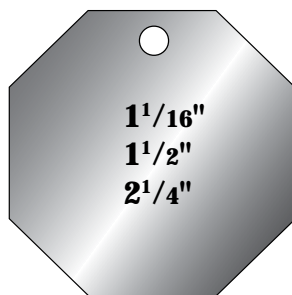
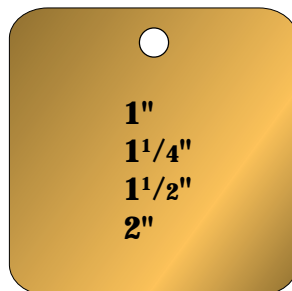


EQ-106
(4" x 1 1/2")

Etched Equipment Tags. Black, red, blue, green anodized aluminum. 1/8" Holes. Prices each.

Style	Size	Lines of Copy	10	25	50	100
EQ-102	2 1/2" x 3/4"	1	\$ 9.76	\$ 5.54	\$ 4.05	\$ 3.29
EQ-104	3" x 1"	2	11.62	6.98	5.35	4.46
EQ-106	4" x 1 1/2"	3	14.12	9.04	7.18	6.15

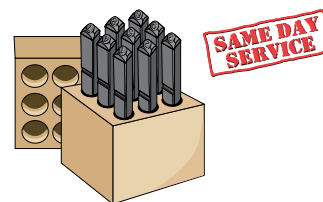
Other Sizes/Shapes



Phone, fax or eMail for a **FAST QUOTE**

Order any of the blank tags above and create your own valve tags on site with ...

Steel Hand Stamps



Size	Figure Set	Letter Set
3/32"	\$ 29.20	\$ 87.50
1/8"	29.20	87.50
3/16"	36.40	109.10
1/4"	43.50	130.50
3/8"	63.70	190.90
1/2"	94.50	283.40